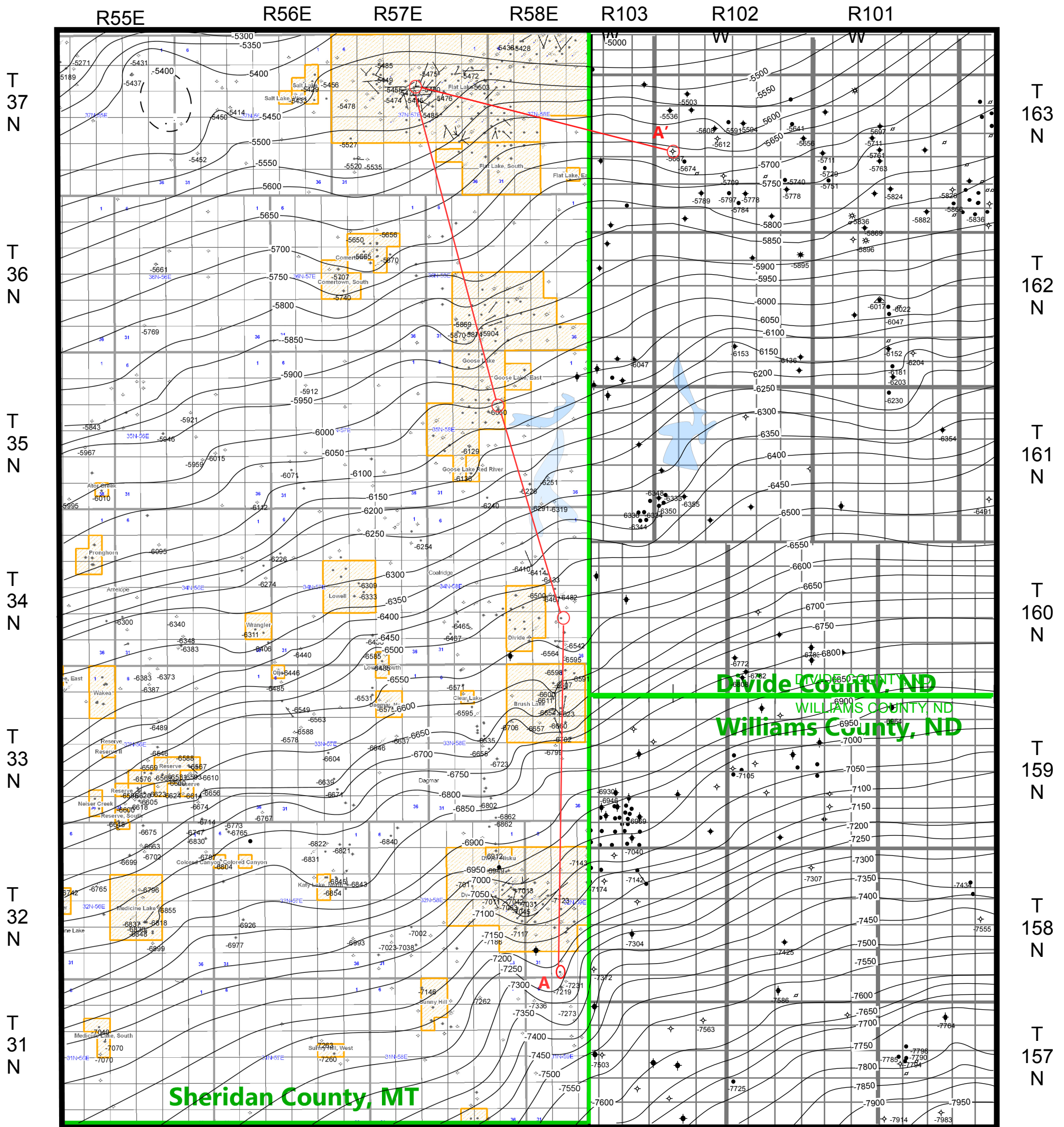


**Medicine Lake Oil Prospect
Attachment #4**

Montana

North Dakota



Prepared for Mountain View Energy Ltd.

by
Campen Consultants, Inc.
3130 Reimers Park Drive
Billings, MT 59102

telephone: 406-652-1760
fax: 406-655-9172
email: betsyncampen@bresnan.net

Medicine Lake Prospect

Sheridan County, MT
Divide and Williams Counties, ND
Structure Contour Map on top of
Bakken Shale
50' contour interval

Cross section A-A' (Attachment #3)

Betsy Campen
November 11, 2011