

A
SOUTH

A'
NORTH

1

ARCO OIL & GAS COMPANY
HOFFELT #2
NESEW-SEC.32-T32N-R59E

13.5 MILES

2

DONALD C. SLAWSON
HAAVEN # 1-25
NW-SEC.25-T34N-R58E

8.5 MILES

3

APACHE CORPORATION
GOOSE LAKE DEEP STATE # 2-13
NWNE-SEC.16-T35N-R58E

13 MILES

4

WASCANA OIL & GSA INC.
WASCANA HEPNER # 1
SWSW-SEC.10-T37N-R57E

11 MILES

5

CONOCO
MOORE # 20-1
SESE-SEC.18-T163N-R102W

KB 2163' ● TD 12,080'
Compl. 10/84

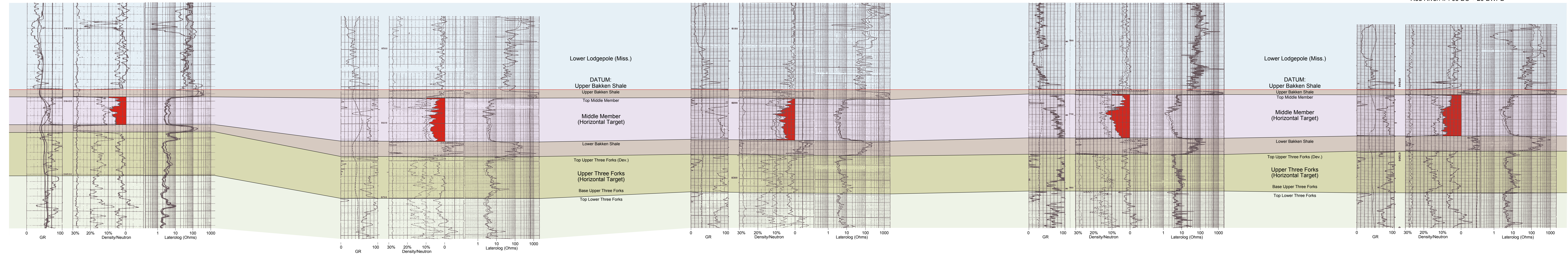
KB 2054' ● TD 11,376'
Compl. 4/88

KB 2122' ○ TD 10,930'
Compl. 7/89

KB 2227' ● TD 8,450'
Compl. 10/96

KB 2185' ● TD 10,789'
Compl. 7/92

Red River: IP: 65 BO + 29 BWPD



CENTRAL WILLISTON BASIN
SHERIDAN COUNTY, MONTANA and DIVIDE COUNTY, NORTH DAKOTA

STRATIGRAPHIC CROSS SECTION A-A'
BAKKEN / THREE FORKS FORMATIONS

DATUM: UPPER BAKKEN SHALE