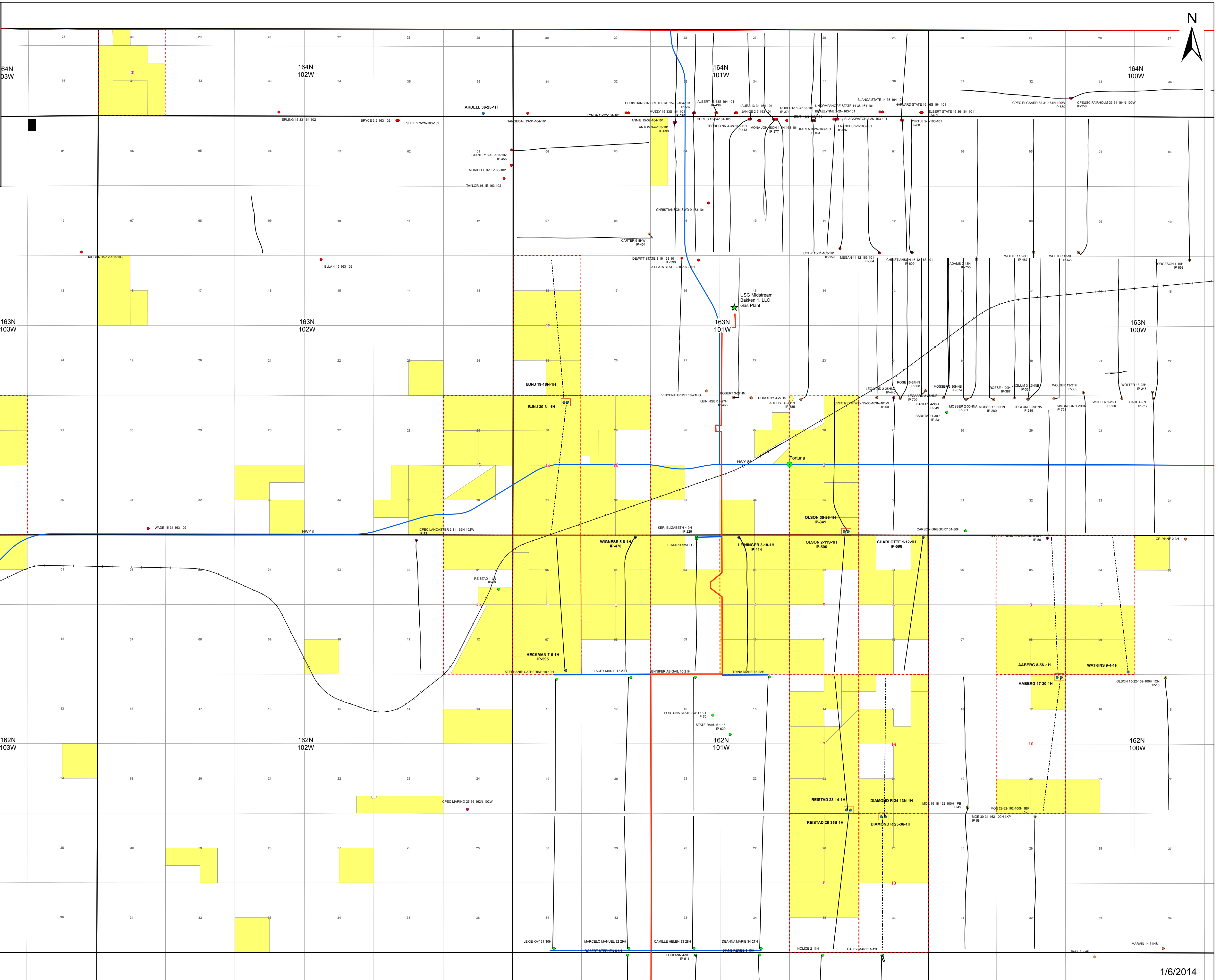


Mountain Divide, LLC

A SUBSIDIARY OF



Mountain Divide, LLC

- MOUNTAIN_DIVIDE_LLC
- Dual Pad
- Horizontal
- - - - 2014 Proposed Horizontal
- NON-OP WELLS
- AMERICAN EAGLE ENERGY CORPORATION
- BAYTEX ENERGY USA LTD
- CRESCENT POINT ENERGY U.S. CORP.
- MUREX PETROLEUM CORPORATION
- SAMSON RESOURCES COMPANY
- SM ENERGY COMPANY
- ★ Gas Plant
- Gas Pipeline Spur
- Gas Pipeline
- Cities
- Highways
- Railroads
- County
- - - - Proposed 12 Gage Spacing Units
- 12 Gage Acreage